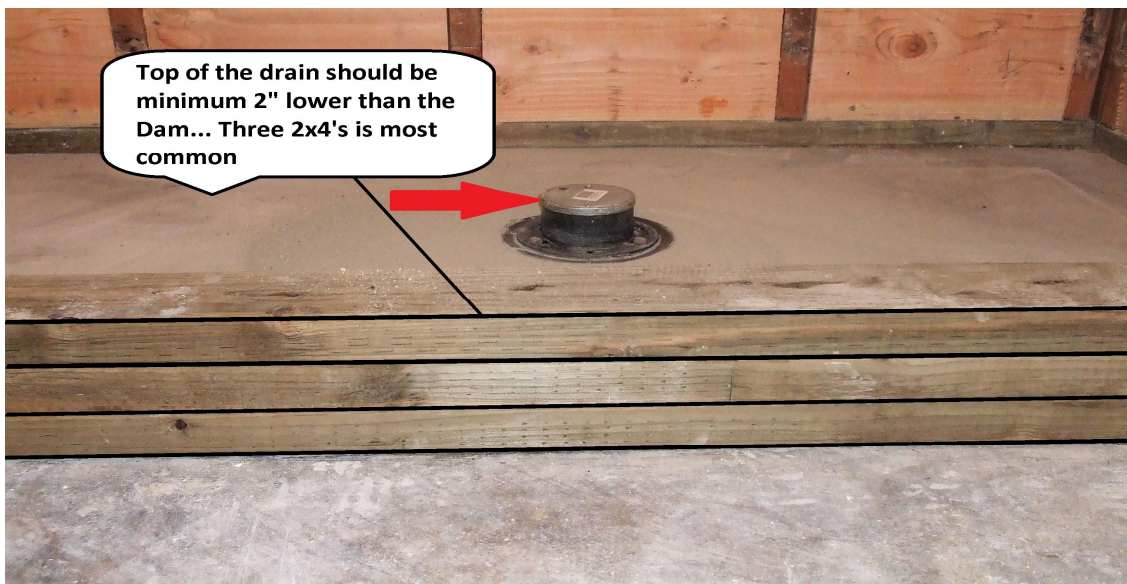


## **A SIMPLE GUIDE TO HOT MOP PREP**

1. Standard Shower Construction: **1-888-544-1644**
  - **Blocking for showers** consist of 2X10s placed in between the vertical wall studs. If 2X10s are unavailable the use of 2X6s stacked on top of each other to create a total of 12 inches high would be more than enough. If vent pipes or plumbing lines are in the way you may want to use a 1/2" plywood, or thin gauge metal to close the gap.



- **Curbs also commonly called the Dam** are most commonly constructed of three 2X4s stacked flat on top of each other. What determines the height of the Dam is where the drain top height is. The Dam should be a minimum 2" higher than the top of the drain. Put a level on top of the drain and make sure the Dam is higher to hold water from leaking over.

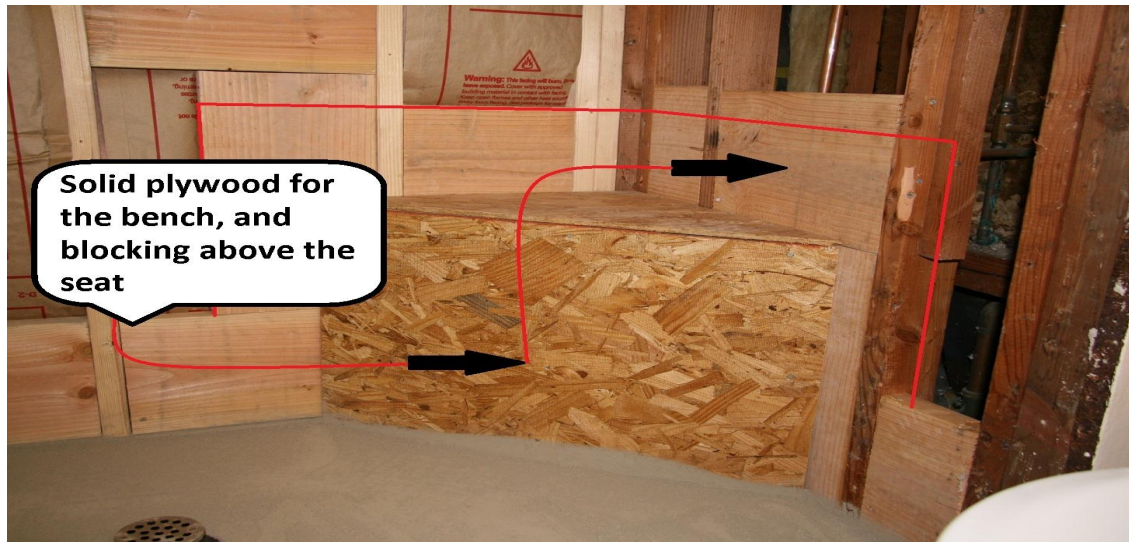




## GUIDE TO HOT MOP PREP

Standard Shower Construction: **1-888-544-1644**

- **Seats and Benches** are framed to the size and shape desired and sheeted with a solid plywood backing. Remember that we hot mop up the face of the bench, then onto the flat part where your butt sits, and then from there we go back up the wall 6ö so remember to put minimum 6ö blocking above the bench in between the studs.



- **Drains for Hot Mop** consist of a clamping style. This is övery importantö to create a gasket at the drain. Set the drains bottom flange, flush to the floorí If there is a hole in the concrete that needs to be filled I prefer the use of Pea-Gravel (Itø easy to fix if we need to correct a problem) Many people will supply only a new top, make sure to remove the old top and scrape the old hot mop clean and test to make sure it fits (most do..)

